

FEBRUARY, 1987
SHEET 2 OF 2

PLAT NO. 28

BEING PARCEL NO. 15

MARTIN DOWNS P.U.D.

LYING IN SECTION 7,
TOWNSHIP 38 SOUTH, RANGE 41 EAST,
MARTIN COUNTY, FLORIDA.

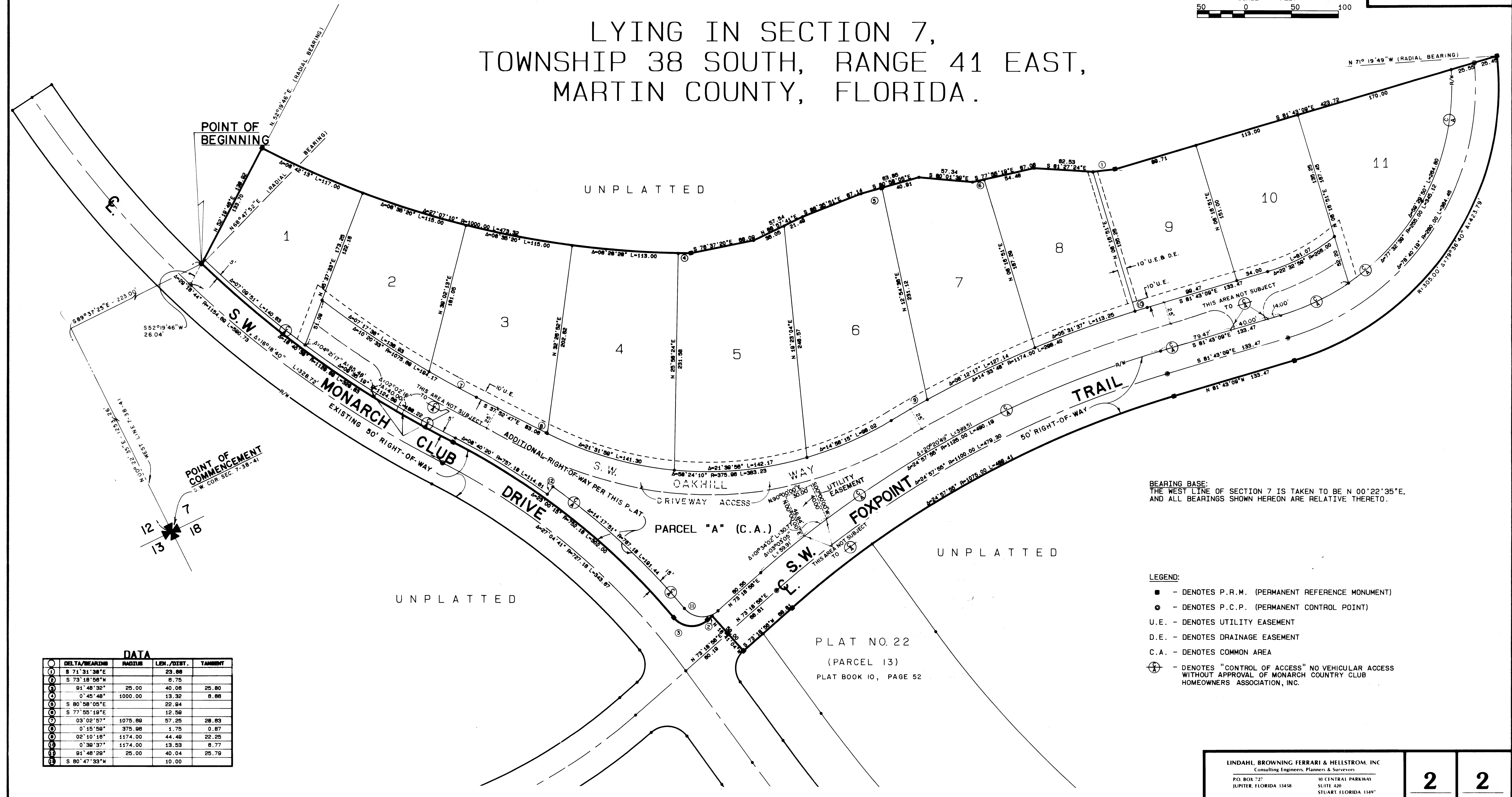
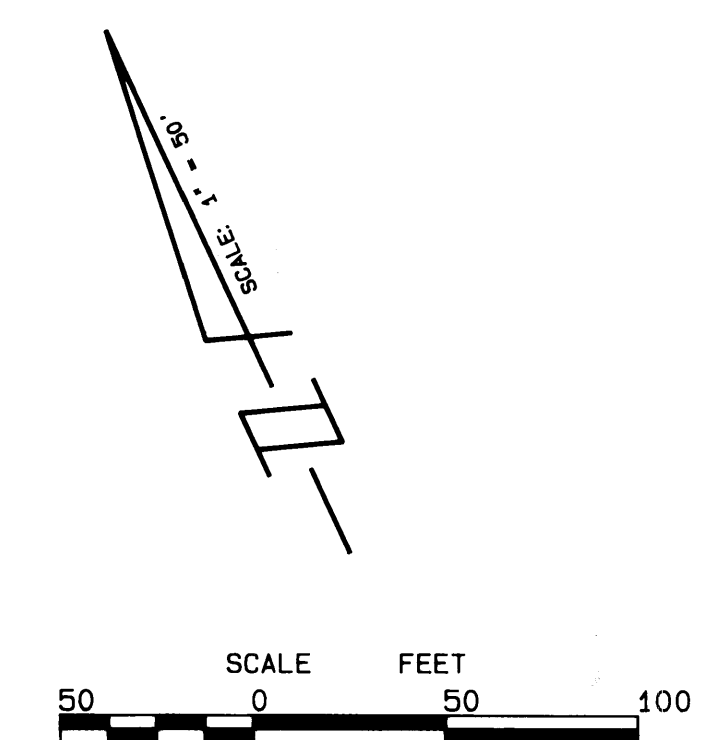
I, Marsha Stiller, Clerk of the Circuit Court of Martin County, Florida, hereby certify that this Plat was filed for record in Plat Book 10, Page 73, Martin County, Florida, Public Records, this day of 1987.

Marsha Stiller, Clerk
Circuit Court
Martin County, Florida

By: _____
Deputy Clerk

File No. _____

(Circuit Court Seal)



DATA

DELTA/BEARING	RADIUS	LEN./DIST.	TANGENT
S 71° 31' 38" E		23.66	
S 73° 18' 58" W		8.75	
S 81° 48' 32"	25.00	40.08	25.80
0° 45' 48"	1000.00	13.32	8.88
S 80° 58' 05" E		22.84	
S 77° 55' 19" E		12.59	
03° 02' 57"	1075.89	57.25	28.83
0° 15' 58"	375.88	1.75	0.87
02° 10' 18"	1174.00	44.49	22.25
0° 39' 37"	1174.00	13.53	8.77
S 81° 48' 29"	25.00	40.04	25.79
S 80° 47' 33" W		10.00	

BEARING BASE:
THE WEST LINE OF SECTION 7 IS TAKEN TO BE N 00° 22' 35" E.
AND ALL BEARINGS SHOWN HEREON ARE RELATIVE THERETO.

- LEGEND:**
- - DENOTES P.R.M. (PERMANENT REFERENCE MONUMENT)
 - ⊙ - DENOTES P.C.P. (PERMANENT CONTROL POINT)
 - U.E. - DENOTES UTILITY EASEMENT
 - D.E. - DENOTES DRAINAGE EASEMENT
 - C.A. - DENOTES COMMON AREA
 - ⊕ - DENOTES "CONTROL OF ACCESS" NO VEHICULAR ACCESS WITHOUT APPROVAL OF MONARCH COUNTRY CLUB HOMEOWNERS ASSOCIATION, INC.

PLAT NO. 22
(PARCEL 13)
PLAT BOOK 10, PAGE 52

LINDAHL BROWNING FERRARI & HELLSTROM, INC.
Consulting Engineers, Planners & Surveyors
P.O. BOX 77
JUPITER, FLORIDA 33458
30 CENTRAL PARKWAY
SUITE 420
STUART, FLORIDA 33497